



Deep Curly Human Hair Wigs Medium Brown Color / unprocessed virgin human hair

Our Product Introduction

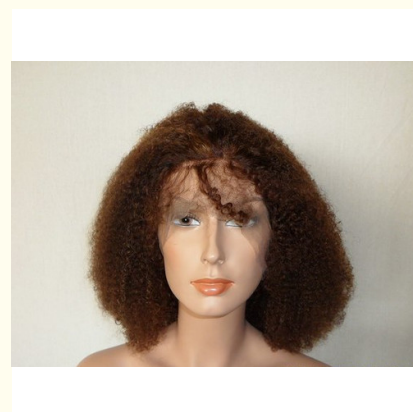
Basic Information

- Place of Origin: 1
- Brand Name: 2
- Certification: 3
- Model Number: ECW0303
- Minimum Order Quantity: 100
- Price: negotiated
- Packaging Details: 付款方式
- Delivery Time: 供 能力
- Payment Terms: 期限
- Supply Ability: 常 包装



Product Specification

- Wig Hair Style: Deep Curly
- Wig Density: 130% Density
- With Baby Hair: Yes
- Wig Type: Full Lace Wigs
- Lace Color: Medium Brown Color
- Wig Cap Size: S, M, L For Your Choice
- Highlight: **top closure virgin hair,
human hair full lace wigs**



Product Description

Deep Curly Human Hair Wigs Medium Brown Color / unprocessed virgin human hair

Description Of Full Lace Wigs

| | |
|----------------|---|
| Wig Name | Full Lace Wigs |
| Wig Texture | Curly Hair |
| Hair Wig Color | Natural Black Color |
| Wig Fixed By | Wig Tapes or Wig Adhesive |
| Lace Material | Swiss Lace |
| Lace Color | Medium Color, Light Color, Dark Color etc |
| Original Hair | Brazilian Curly Hair |
| Cap Sizes | S, M, L Different Sizes |

About Shipment

| |
|--|
| 1. Fast Delivery with 2-3 days |
| 2. Safe to be sent as wig or wig samples, fasten Custom clearance |
| 3. After Shipping, we will inform you the tracking number, you can track your order status through website |
| 4. Before placing your order, please confirm pricing and other details with us. To avoid that you get the wrong hair |
| 5. Please make sure that you read all our hair details and agree the transaction before buying |

Hair Color Details:

Dark color: #1, #1b, #2, #3, #4, #6.

Medium color: #8, #10, #12, #14, #16, #30, #33, #130, #350, #530, #99j

Light color: #18, #20, #24, #27, #60, #613, #120.

Bright color: red, blue, purple, green, yellow, orange, pink,

Two tone, mixed color, Piano Color (face to face color/side by side color) any color is available.

We also can make colors as your own color chart.

Return & Refund Policy

1. Return/Refund is accepted within 7 days (the date depends on the DHL); please contact us first and return the goods.
2. To avoid delivery lost, return should be arranged by register airmail, and the shipping fees of return should be paid by the buyer.
3. Not receiving your package, please contact us within 7 days.
4. Please make the items remain the original state. We only accept not damaged items.



Ellawig companys



+86-15399918960



service@ellawigss.com



ladyshairextensions.com

Room 501, unit 6, building 20, North Lane, east flower market, Beijing